



Help Your Hive Thrive



Listen & Act

The Governor General of Australia filmed a message for World Bee Day. [Watch it here](#), then reflect on what you discovered.

6 Ideas in 6 Minutes

Create a collection of bee-friendly ideas you can act on using [this activity sheet](#).

Backyard Buddies

Watch author Andy Geppert read [Backyard Buddies](#). Discover simple ideas to help insects thrive in your backyard. Find accompanying activity sheets [here](#).

Bees & Democracy

Do some research to discover the connections between democracy and bees. You can start your research at our [HiveMind website](#)

Slow looking

Spend time in nature, take a notebook to write or draw some of the things you notice.



Reflect and create

Create a poster, badge, t-shirt or digital piece about why bees are so important to the environment. Using [this template](#) to build ideas.

Support local!

Learn about the local species of bees found in your community. What native flowers do they like?

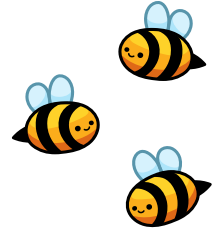
Helpful Hive with ABC

Watch [this ABC video](#) on how maths can help us understand bees. Next, follow the instructions to create your own bee hotel!



6 Ideas in 6 Minutes

Set a timer for 1 minute and challenge yourself to come up with one idea about how you can care for bees, add it to a hexagon. Then, start the timer again for your next idea! Do this six times to create a collection of bee-friendly ideas you can act on.

A honeycomb grid consisting of seven hexagons. The central hexagon contains a colorful illustration of a beehive with a green flower above it and a single bee flying to the right. The other six hexagons are empty, intended for users to write their ideas.

Save the Bees

This is the MoAD Democracy Tree drawn by artist Eric Lobbecke.
Read about, discuss and consider the following questions.



Why are bees important to the environment?
What can you do to help local bees to thrive?

Make an artwork under and around the Democracy Tree sharing ways you can tell others about how important bees are to the environment.

